

ALFA MARIO



ALFA MARIO SEASON 2025

STUNNING SUPERSIZED

At 52 meters, Alfa Mario is one of the largest Croatian yachts of its type.
This 16-cabin stunner can accommodate up to 32 people, hosted by 11 crew.

LUXURY LIFESTYLE



Lounge & Recharge



DESTINATION

Croatia

43.8707° N

15.2324° E

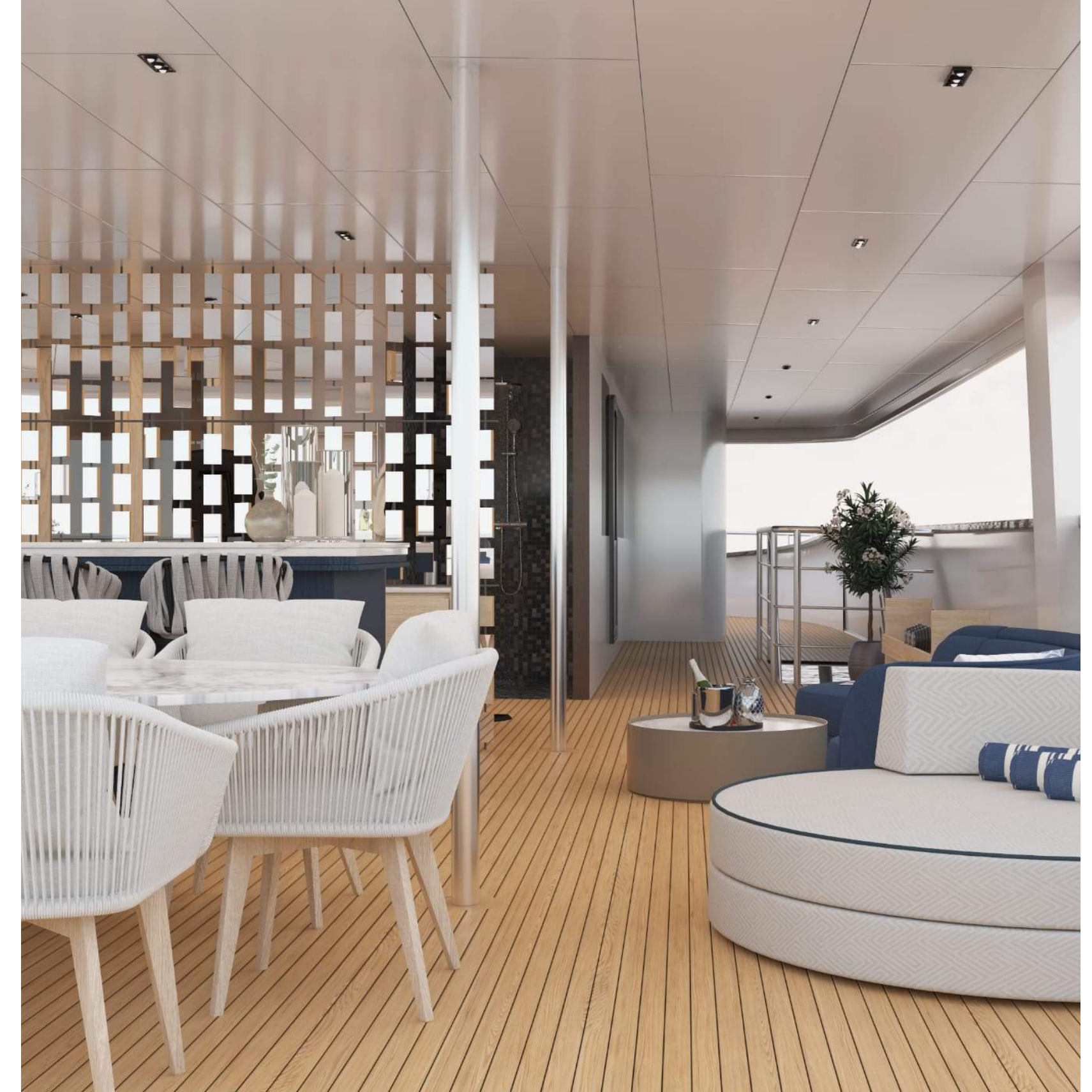
Croatia is one of the most popular yachting destinations with many beautiful regions, historic towns, islands, and small villages.

The Exterior

M/Y Alfa Mario is the pride and joy of the Ercegovič family, shipbuilders with a long tradition and a numerous fleet under their belt.

White padded cushioned lounge areas, sunchairs, a jacuzzi, and the outdoor bar are just some of the beautiful features on the sundeck.

She is ideal for large groups or families. Her clean lines, modern design, and amenities of a five-star hotel will leave you speechless.



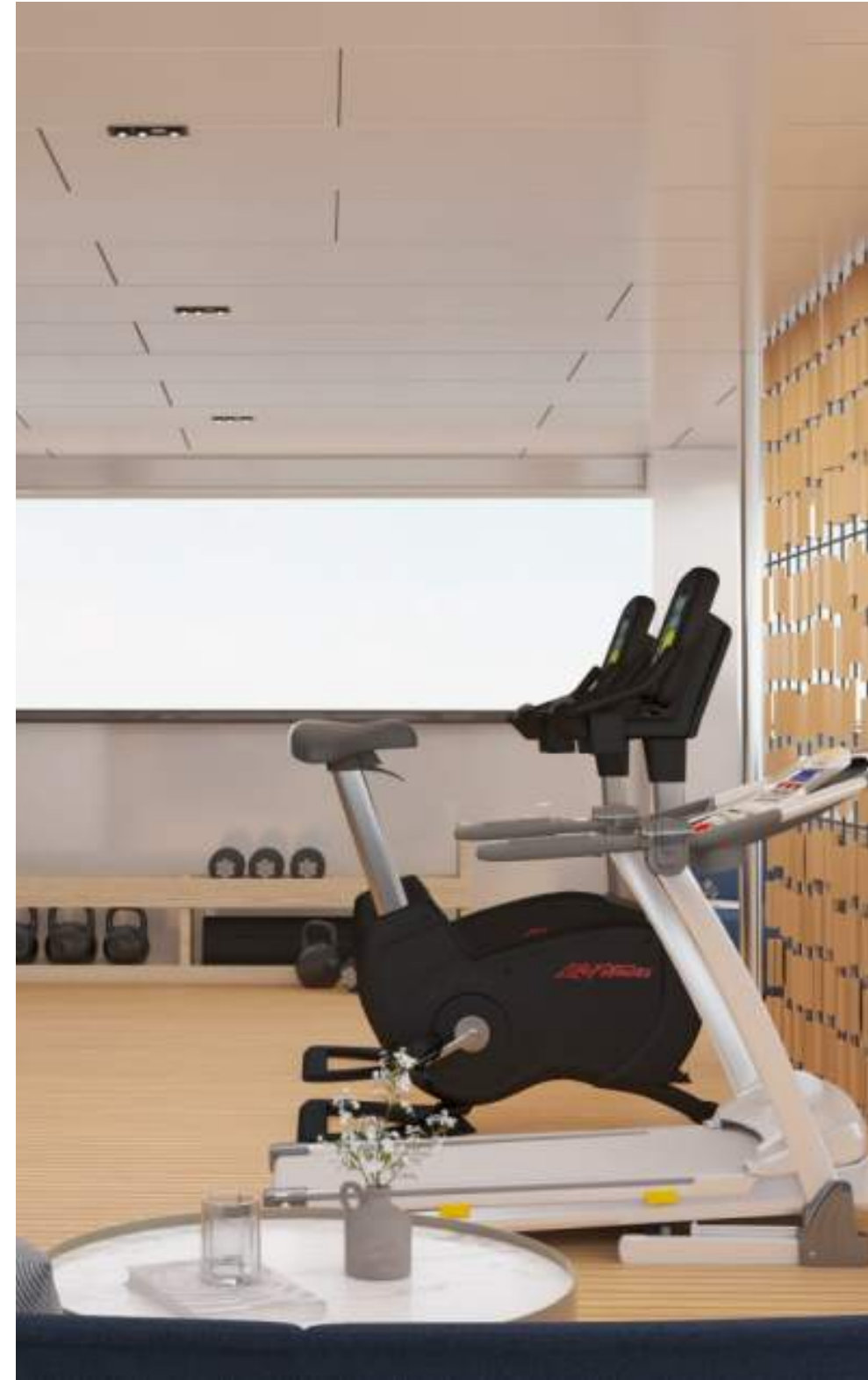
The Interior

The indoor salon features floor-to-ceiling windows, from which you can enjoy the passing scenery from every part of the room. Dining tables with velvet chairs and comfortable sofas throughout the salon provide the ultimate hang-out area. A fully stocked bar and a piano will make sure that you and your guests can have great fun also indoors.



Yacht Amenities

You can enjoy the jacuzzi, sauna, gym, and brand new cinema on deck. To enjoy a relaxed vibe, there is a big lounge bar with a piano, and a well-stocked bar in the salon.



Ample variety of watersports

Alfa Mario carries all three of the most popular recreational watercraft aboard - jet ski, E-foil, and a sea bob. In addition, there are two kayaks, two paddleboards, and a tube ride.



Specifications

Length

52 m
(170' 7")

Beam

8.6 m
(28' 2")

Draft

2.5 m
(8' 2")

Cruise speed

9 knots

Cabins / Guests

16 32

Built / Renovated

2021/ 2024

Water Sports

Jet ski, SeaBob,
E-Foil, Tube ride,
2 Paddleboards, 2 Kayaks

Crew Description

11 crew members

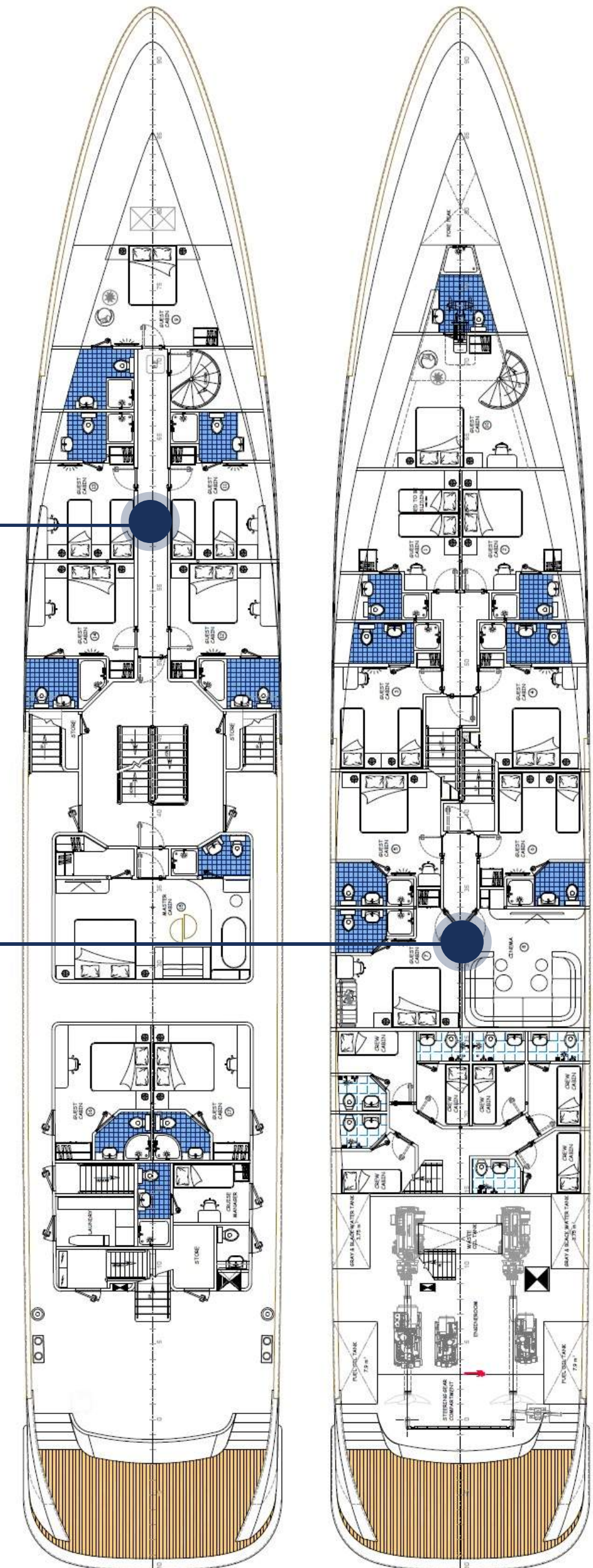
Cabin Description

MAIN DECK

- Master cabin with a double bed. Private bathroom with shower box and home-type toilet.
- 4 Double cabins with a double bed. Private bathroom with shower box and home-type toilet.
- 2 Convertible cabins (twin or double). Private bathroom with shower box and home-type toilet.

LOWER DECK

- 6 Double cabins with double beds. Private bathroom with shower box and home-type toilet.
- 3 Convertible cabins (twin or double). Private bathroom with shower box and home-type toilet.



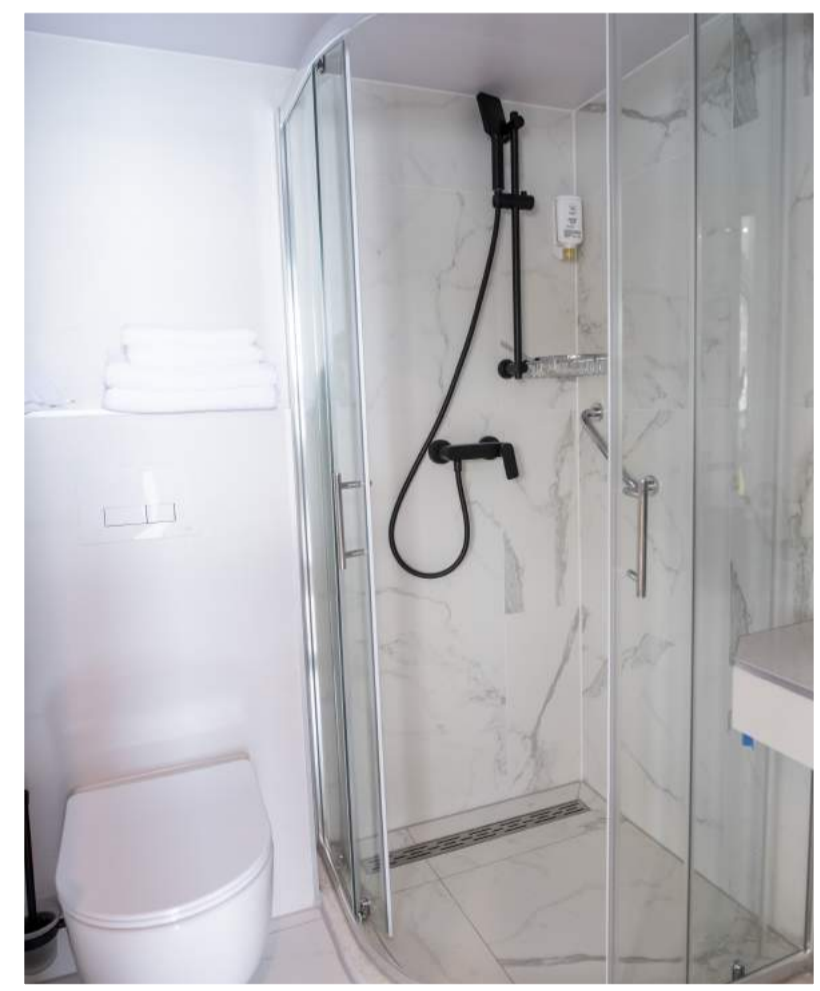
Cabin Details



MASTER CABIN



TWIN CABIN



DOUBLE CABIN





Space & Elegance

PRICES

SEASON A

From 20 April 2025
till 18 May 2025

€90,000

(VAT included)

SEASON B

From 18 May 2025
till 15 June 2025

€100,000

(VAT included)

SEASON C

From 15 June 2025
till 31 August 2025

€110,000

(VAT included)

SEASON D

From 31 August 2025
till 21 September 2025

€100,000

(VAT included)

SEASON E

From 21 September 2025
till 26 October 2025

€90,000

(VAT included)

INCLUDED

Agency Support: guidance through the booking procedure, paperwork, preparation for the cruise, food, drinks, and route organization, during the cruise support, assistance in case of emergency. Entire support before and during the cruise.

Shipboard accommodation: maximum number of 32 guests sleeping in 16 cabins.

Crew: 11 crew members **Fuel for cruising:** 4 hours/day

Linen: bed sheets, bathroom, and beach towels.

Air conditioning: unlimited hours/day.

Wi-Fi: unlimited

VAT

EXTRA PAYMENTS

Mandatory extras

A.P.A. (Advance Provisioning Allowance)

30% of the charter price: To cover the following costs, but not limited to: fuel for tender and water sports equipment; additional fuel for cruising (above 4 h per day), food and beverages for the Charter Party; berthing dues and other harbor charges including pilots' fees, local taxes, divers' fees, customs formalities, charges for waste disposal, charges for water and electricity taken from shore; shipping agents' fees where applicable; Charter Party personal laundry; hire or purchase costs of any special equipment placed on board at the Charterer's request, shoreside transport and excursions, national park entrances and other costs for services requested by Charter Party during the charter and all other costs not specified as included. A.P.A is paid by the Client in addition to the charter fee for all relevant costs for the vessel that are not included in the charter fee. If A.P.A does not cover complete costs, the Client will pay exceeding the amount on board in cash. If costs made on charter are less than the amount given as A.P.A, the amount that was not spent will be returned to the Client at the end of the voyage. A.P.A. does not include a tip for the crew.

Non-Mandatory extras

TIPS: Tips are not included in the price of the charter and are a voluntary way of showing appreciation for a good service. Usually it is 10% to 15% of the charter price, according to your satisfaction, paid to the captain at the end of the charter and distributed equally by the captain to the rest of the crew.

Additional Motorized Water Sports: Alfa Mario has Jet ski which is charged 150 €/hour according to clients usage. Tube ride (3 guests max) is charged 40 €/hour according to clients usage. SeaBob and E-foil are charged 50 €/15 minutes according to clients usage. Unlimited usage of E-foil is 1.200 €/week and unlimited usage of SeaBob is charged 1.000 €/week. You can also choose a package of unlimited water toys, which costs 3.000 €/week.

Alfa Mario